



Finding serial numbers on LTB-8

The LTB-8 consists of lab main chassis unit that can accommodate up to 8 modules; this RMA request requires the serial numbers of all units that will be sent for service, even serial numbers of units that don't require service but will be returned within the RMA request. Click the links below to know how to retrieve those serial numbers:

- [LTB-8 main chassis serial number](#)
- **Modules** serial numbers: If you cannot retrieve the serial number from "ToolBox", please view "By removing the modules".
 - [In "ToolBox"](#)
 - [By removing the modules](#)

Contact EXFO's [technical support](#) should you have any question.

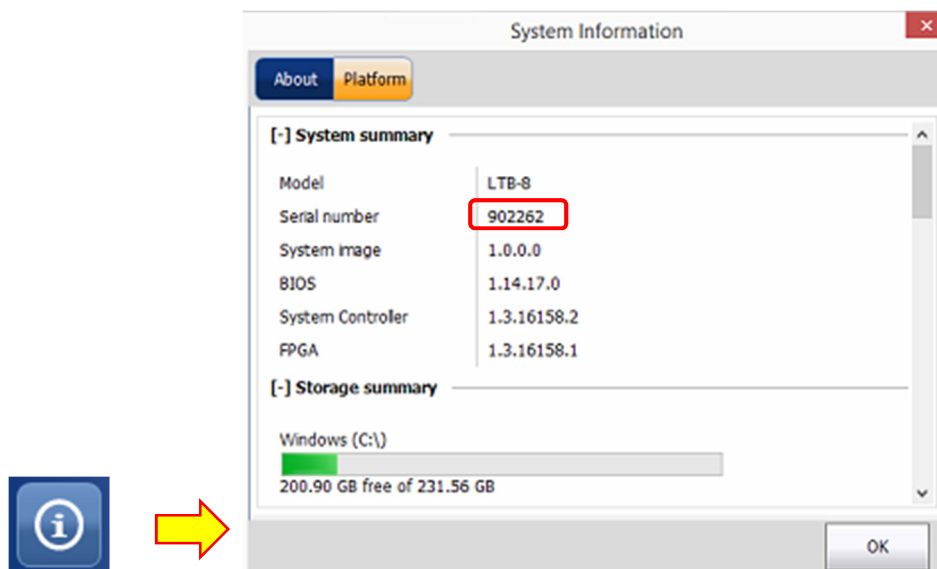
Back of the main chassis

The serial number of LTB-8 can be found:

- At the back of the main chassis:



- Or in “ToolBox/System Info/Platform”

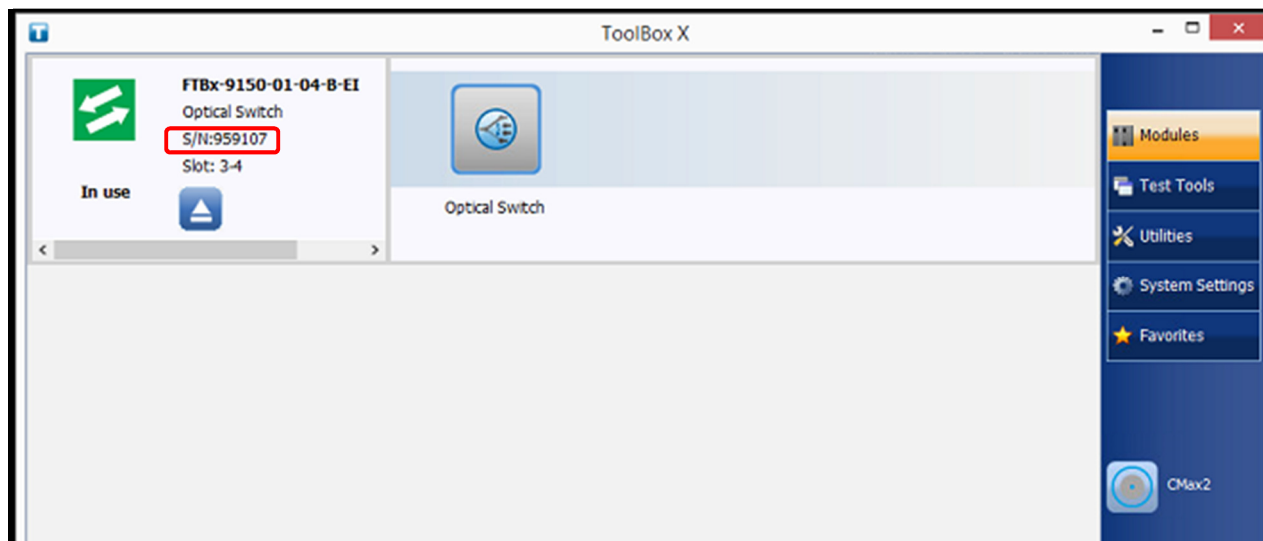


[Back to top](#)

Modules serial numbers in “ToolBox”



The serial numbers of the modules can be found in “**ToolBox**” or by removing the modules:

- ToolBox:
 - In the “**Modules**” tab



[Back to top](#)

Removing the modules

1. From ToolBox X click the  button **OR** on the front panel of your LTB-8 press the  button corresponding to the module to remove.
2. Turn the locking screws counter clock wise until they are loose; since the screws are captive they cannot be removed completely.

CAUTION

Wait until the status of the module switches to "Safe to Remove" in ToolBox X, or the H/S LED turns steady blue on the unit's front panel.

3. Hold the module by its sides or by the retaining screws (not by connectors) and pull it out.
4. The serial number is on the side of the modules.



Retaining screws



[Back to top](#)