

## Finding serial numbers on FTB-500

The FTB-500 consists of a mainframe unit that can house up to 8 modules and can be equipped with a Power Meter module on the lower right side; this RMA request requires the serial numbers of all units that will be sent for service, even serial numbers of units that don't require service but will be returned within the RMA request. Click the links below to know how to retrieve those serial numbers:

- [FTB-500 platform serial number](#)
- **Modules** serial numbers: If you cannot retrieve the serial number from "ToolBox", please view "By removing the modules"
  - [In "ToolBox"](#)
  - [By removing the modules](#)
- **Power Meter** (if present); If you cannot retrieve the serial number from "ToolBox", please view "By removing the Power Meter module"
  - [In "ToolBox"](#)
  - [By removing the Power Meter module](#)

Contact EXFO's [technical support](#) should you have any question.

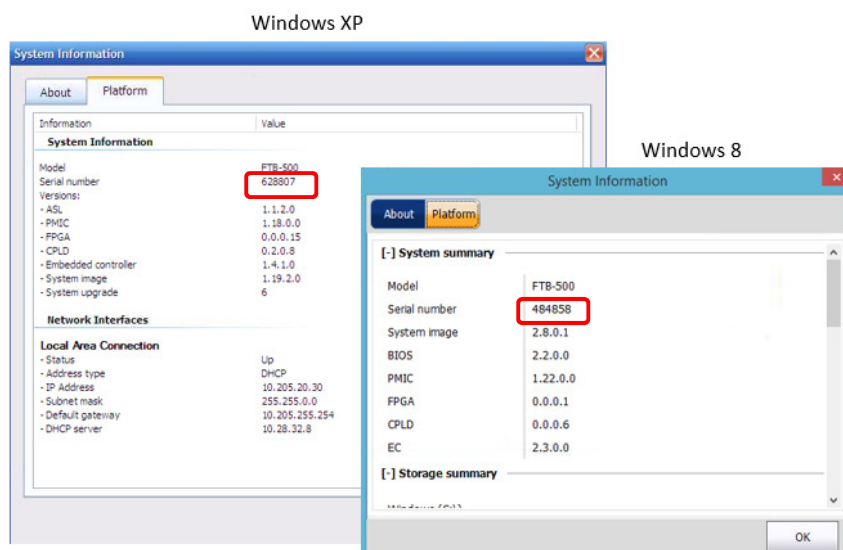
## Back of the platform

The serial number of the FTB-500 platform can be found:

- At the back of the unit:



- Or in:
  - **"ToolBox/System Info/Platform"** (Windows XP)
  - **"ToolBox/Info/Platform"** (Windows 8)

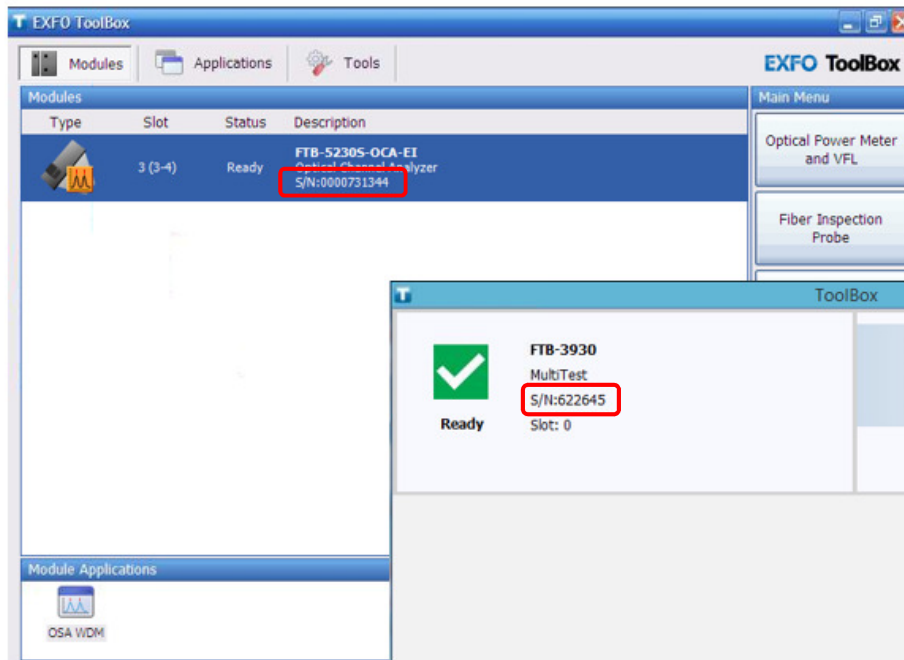


[Back to top](#)

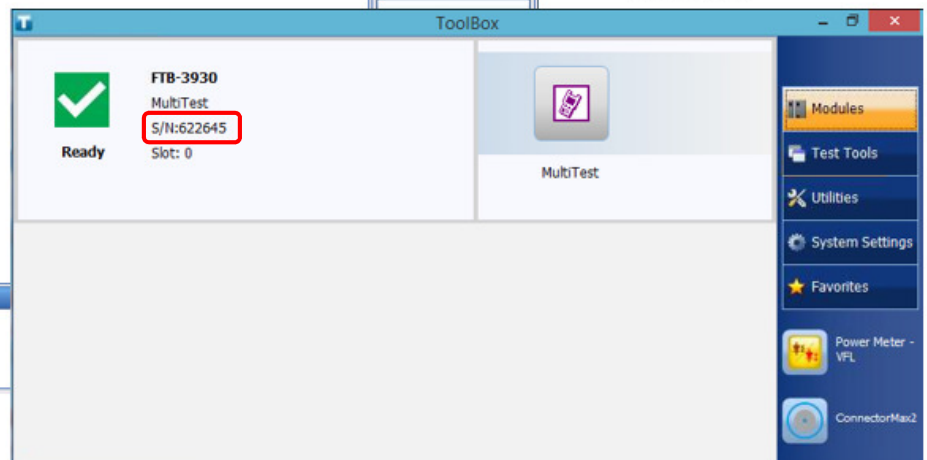
## Modules serial numbers in “ToolBox”

The serial numbers of the modules can be found in “**ToolBox/Modules tab**”:

Windows XP



Windows 8



[Back to top](#)

## Removing the modules

1. Shutdown the FTB-500 (no hibernate or sleep mode)
2. Turn the retaining screw counter clock wise
3. Hold the module by its sides or by the handle and pull it out
4. The serial number is on the side of the modules



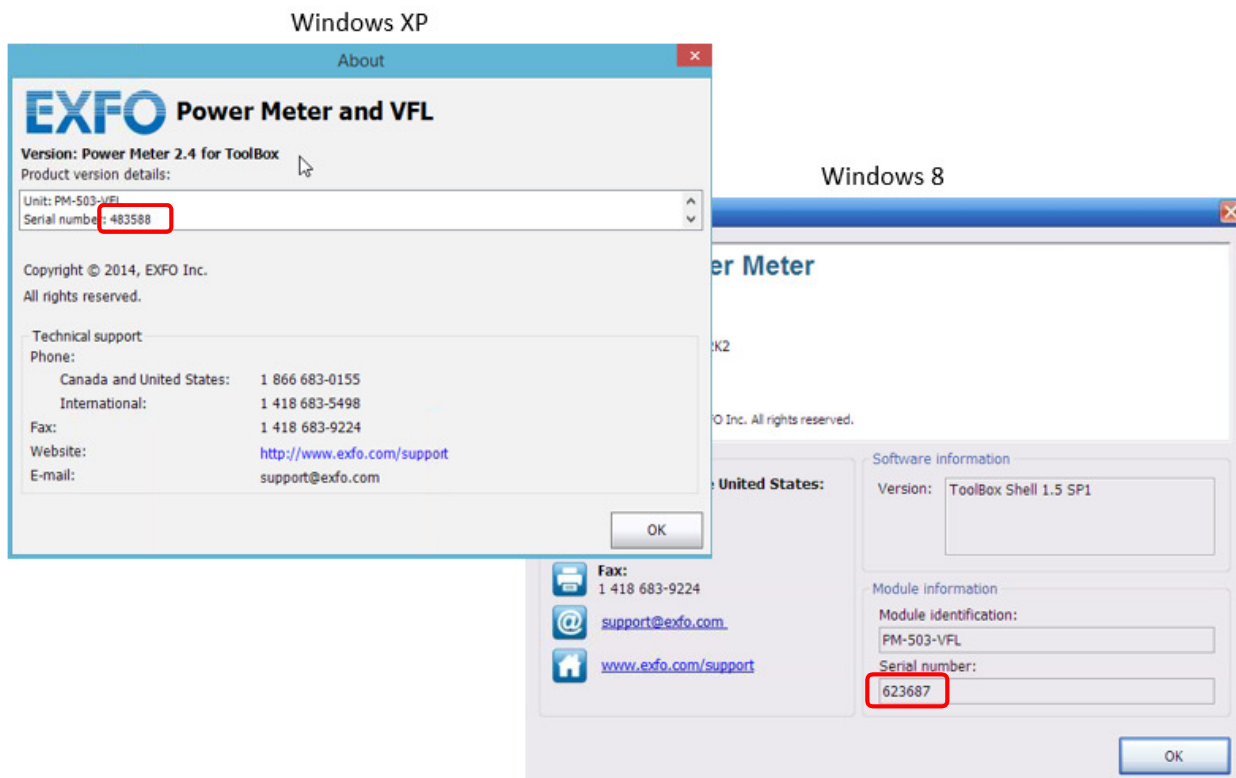
[Back to top](#)



## Power Meter serial number

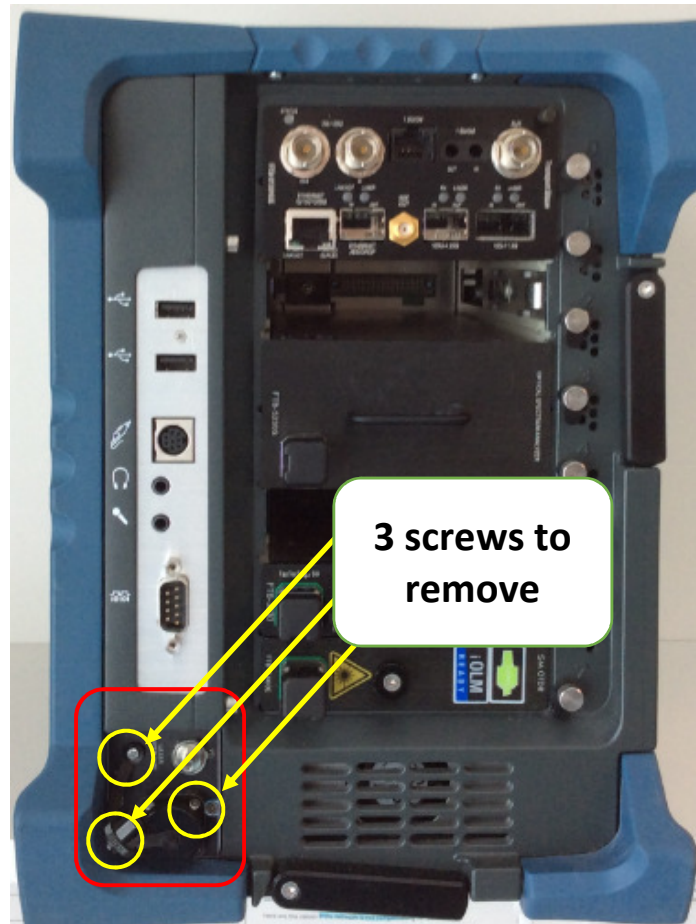
The serial number of the Power Meter can be found in:

- “ToolBox /Power Meter – VFL/About” (Windows XP)
- “ToolBox /Power Meter – VFL/Info” (Windows 8)



[Back to top](#)

## Removing the Power Meter unit



1. The power meter module is located at the bottom right side of the FTB-500
2. Remove 3 screws
3. Remove the Power Meter module
4. The serial number is on the board



[Back to top](#)