

Finding serial numbers on FTB-1 V2 and FTB-1 V2 Pro

The FTB-1 V2 and FTB-1 V2 Pro consist of a mainframe units that house a single module and can be equipped with a Power Meter module on top; this RMA request requires the serial numbers of all units that will be sent for service, even serial numbers of units that don't require service but will be returned within the RMA request. Click the links below to know how to retrieve those serial numbers:

- [FTB-1 V2 and V2 Pro platform serial number](#)
- **Module** serial number:
 - [In "Mini ToolBox"](#)
 - [At the back of the unit](#)
- **Power Meter** (if present); If you cannot retrieve the serial number from "Mini ToolBox", please view "By removing the Power Meter module"
 - [In "Mini ToolBox"](#)
 - [By removing the Power Meter module](#)

Contact EXFO's [technical support](#) should you have any question.

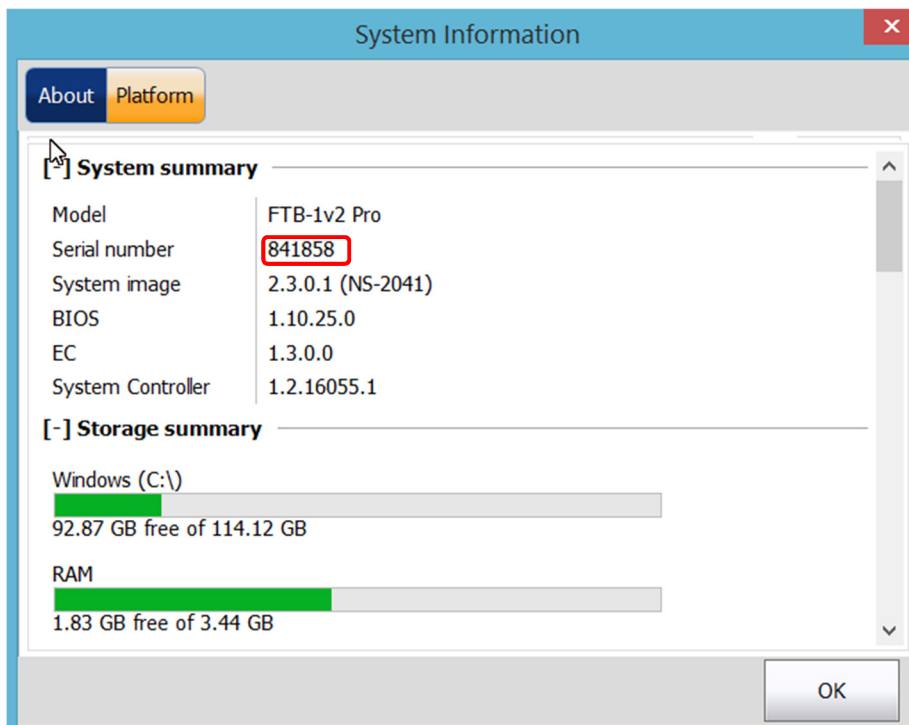
Bottom of the FTB-1 V2 and V2 Pro platforms

The serial number of the FTB-1 V2 and V2 Pro platforms can be found:

- At the bottom of the unit:



- Or in “Mini ToolBox/System Info/Platform”

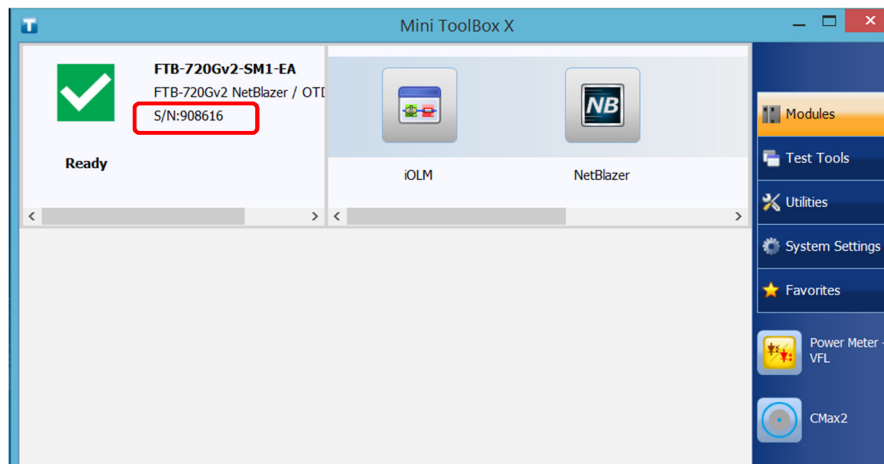


[Back to top](#)

Module serial number in “Mini ToolBox”

The serial numbers of the modules can be found in “**Mini Toolbox**”:

- Mini Toolbox:
 - In the “**Modules**” tab



[Back to top](#)

At the back of the unit



[Back to top](#)

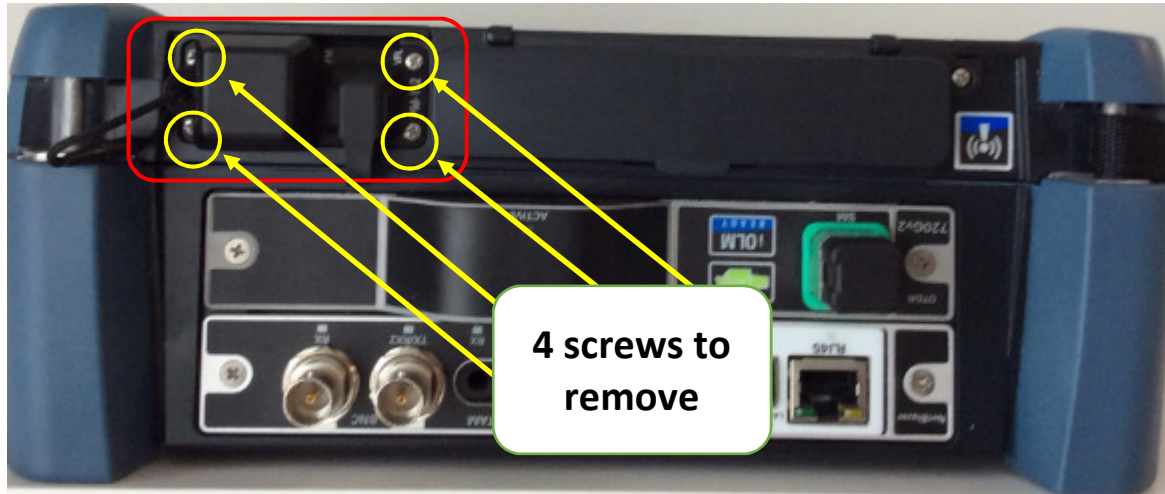
Power Meter serial number

The serial number of the Power Meter can be found in “Mini ToolBox” by clicking “Power Meter and VFL/Info”:



[Back to top](#)

Removing the Power Meter unit



1. Remove 4 screws
2. Remove the Power Meter module
3. The serial number is on the board



[Back to top](#)